



DBKC NEWS!

Senior Pet Month



Senior pets are often the last ones left in shelters as the majority of potential adopters want puppies or kittens that can grow up with their families. However, a senior pet has lots of positives. They often fit into a family easier and quicker than a puppy and generally require less exercise.

We've had a number of senior or older dogs for rehoming recently and they have made great additions to their new families. If you'd consider adopting a senior dog, let us know. Alternatively,

if you have a senior pet and would like to share your story with us for a future edition, email us and send us a photo and we will include you in our new feature 'Senior Super Stars'.

In this month's Newsletter we find out about the Saluki in Breed Profile, we learn about Distemper in Vets Corner and also understand more about Doggy DNA Breed Testing in Ask Pauline.

ISSUE 25 / NOVEMBER 2014

Contents

Ask Pauline – this month we look at the topic of Doggy DNA Breed Testing.



Monthly Breed Focus – This month we find out about the Saluki

This month, Vets Corner looks at the topic of Distemper



We also take the opportunity to update you on how our Play Day Loyalty Scheme has been going and challenge you to a quiz to win 2 tickets to Nando Brown's Trick Training in December. Enjoy!



Tracy Whelan

Play Day Loyalty Scheme Update

Back in May of this year we introduced a Loyalty Scheme for those customers who bring their dogs for Play Days. As it's been running for 6 months now we thought we'd update you on how it's going.

Since launch, 26 customers have benefitted from a Free Play Day! Have you been one of them? If not, why not bring your dog for a Play Day and we'll get you started on filling in your card so that you can be one of those that benefit within the next 6 months.

Play Days can be booked any day from Saturday to Thursday and whilst with us they will have the opportunity to swim or have a go on our specially designed doggy Treadmill. We can also provide supervised socialisation with other dogs or individual playtime if you'd prefer.

Before 6pm, pick up your bathed and tired dog and head home for a relaxing evening.





Monthly Breed Profile The Saluki

The Saluki is a dog with a rich history in Arabia. They are also known as the Arabian Greyhound of the dog world and this tells you how fast and agile they truly are.

They are a member of the sight hound group that historically travelled through the Middle East and Silk Road with nomadic tribes and caravans. As a result it is one of the oldest known breeds of domesticated dog.

Being a sight hound, they are hunters by nature and respond quickly to the movement of prey, usually chasing it down without breaking a sweat! They are lean and incredibly agile with the rib cage generally being visible and this has given them the title of the 'supermodels of the dog world'! They are however also very elegant and graceful dogs. They are available in 2 main coat types; smooth and feathered and both types are silky smooth to the touch. Saluki's are also generally thought of as a low shedding dog compared to other breeds.

Due to their history and nature, they need lots of exercise and the ability to run, and can make excellent jogging companions, if you can keep up with them! Preferably they should be kept on a leash when out as they will pursue anything small and in motion thinking that it is prey. As a

result of their strong prey drive, they are not good in homes with other small pets but can get along with other dogs, other Saluki's being their preference.

Regular, early socialisation is recommended to stop them becoming shy and skittish. They make great companions for homes with older children and adults and can often be seen as gentle, shy, reserved and aloof. Therefore, interacting with your Saluki in positive ways that fit the breed type is a great way to bond your relationship. Once the relationship has developed and is solid, they will be devoted to you.

Saluki's don't make good apartment dogs and therefore if you are thinking of getting a Saluki you need to make sure you have a suitable outside space for them to run, jump and enjoy. They are excellent jumpers, so fences and walls should be of a suitable height as otherwise you may come out to find your garden empty and them off hunting next doors cat!

As they are thin, lean dogs, you need to provide them with comfortable bedding because they don't have any natural 'padding' of their own. They are generally healthy dogs, but the breed has been known to suffer from cancer and cardiac related issues.

Ask Pauline

Over the last couple of months one of the vet practices in Bahrain has introduced the option of Doggy DNA Breed Profiling. In this month's Ask Pauline we find out more about it and the kind of information it provides to you.

Our editor Tracy Whelan and her husband Martin, have 3 dogs, all cross mixes, and all from Bahrain. Tracy & Martin have always believed that their dogs were predominantly a Shih Tzu cross, a Terrier cross, and a Poodle/Maltese cross but were interested to find out if that truly was the case!

The company performing the test is based in Australia and it requires a DNA sample to be taken from each dog and shipped to them. The DNA can either be taken as a cheek swab or a blood test. Either can work, however the blood test tends to be more reliable. Tracy and Martin decided to have a blood test done and to have the blood sent via courier to the processing company. It took slightly longer to clear customs than originally thought, but they were eventually received about 2 weeks later.

Then the processing began! Processing typically takes 2-3 weeks and then once it's completed you receive an email that enables you to download the results which come as a PDF document.

Each report is 6 pages long and includes a Breed Ancestry Certificate. The report identifies the breed types of the parents, the grandparents and the great grandparents and sets these out in a chart, as you can see in the next column.

There may be instances in your reports where it says one of the ancestors may have been 'mixed breed' and on page 2 of the report it gives you an indication of the top 5 breed matches that appeared in your dogs DNA. There are some interesting and surprising breeds that appeared in this section in both Max and Titch's reports.

Pages 3, 4 & 5 of the report then provide more information about the breeds identified to enable the owner to determine if they can recognise any of these traits in their dog.

The reports for both Max & Titch show Shih Tzu and Yorkshire Terrier. Surprisingly Titch's profile shows no Poodle or Maltese at all!

So now we've done the test and got the reports, would they do it again? The answer to this is that the reports are interesting and for mixed breed dogs it does provide information that the owner hasn't had before.

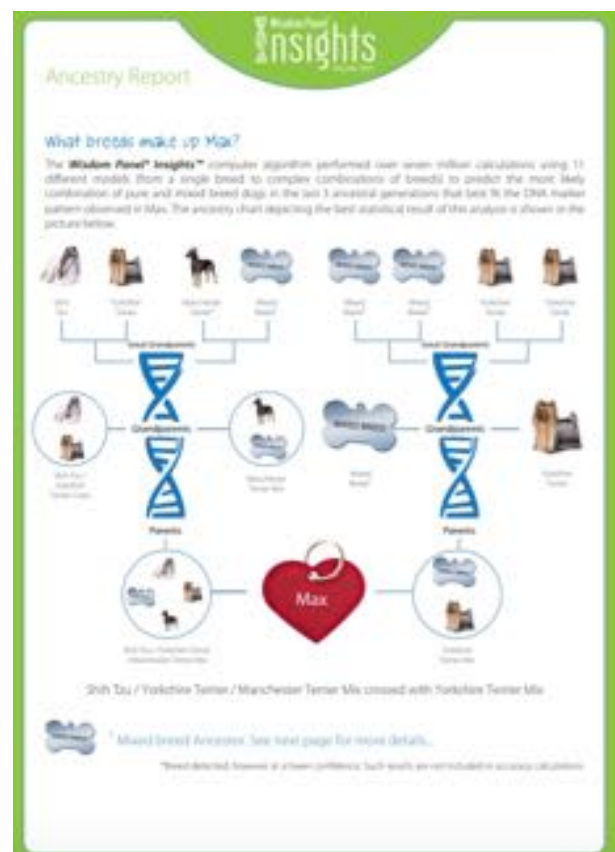


What you know you know, what you don't know you

Ask Pauline!

Tracy said 'If I had a dog that I was sure I knew the breed of, then I wouldn't bother. However there are a large number of mixed breed dogs here in Bahrain and if you're the kind of owner that likes things like this and could use the information to identify better training and exercise strategies and approaches, then I would do it again.'

If you have a question for a future Ask Pauline article, why not email us at newsletter@delmonkennels.com and we will cover it in a future edition.



Vets Corner

When your dog has their annual vaccinations, one of the illnesses they are being vaccinated against is Distemper. In this month's Vets Corner we find out more about this very serious illness.

Canine distemper is a contagious, serious viral illness that has no known cure. The virus is a relative of the measles virus that affects humans and it affects dogs and certain species of wildlife including foxes. It is spread through the air and by direct or indirect contact. As a result of this it can be spread via feeding bowls, bedding etc so early diagnosis is very important so steps can be put in place to stop the spread of the disease.

Once an animal is infected the tonsils and lymph nodes are initially infected and then it spreads to the respiratory, gastro intestinal, urogenital and nervous systems. The symptoms include:

- high fever
- reddened eyes, and
- a watery discharge from the nose and eyes. See photo below.

As the disease progresses the dog will:

- become lethargic and tired
- will stop eating
- develop a persistent cough
- start vomiting and diarrhea

As the disease develops the virus starts attacking other systems in the dog's body, particularly the nervous system and the dog may start to have fits or seizures and may even suffer paralysis.



*The best doctor in the world is a vet.
He can't ask his patients what's wrong
– he just has to know*

If you suspect a dog is suffering from distemper and you take it to a vet, they will conduct a number of tests and urine analysis to identify if it is actually distemper. Unfortunately, if the animal is diagnosed there is no cure and therefore treatment is largely focused on alleviating the symptoms and hoping that the dog's immune system is strong enough for them to recover.

Distemper is a truly awful disease, so please keep your dog's vaccinations up to date. Puppies are especially at risk as are older dogs with a reduced immune system. Dogs that are undernourished and ill kept are also susceptible and therefore if the disease gets a hold in a community of stray animals it can spread quickly.

However, not every animal that catches distemper will die, recovery is possible. Whether a dog recovers is mostly dependent on the strain of the virus and the strength of the dog's immune system. Dogs that fully recover don't carry the virus and can't spread it to other dogs.

The best ways of ensuring your dogs don't catch distemper are:

- Keep vaccinations up to date
- If you notice any unusual symptoms isolate your dog until your vet can look at them
- When exercising off-lead be aware of any stray dogs and limit contact

If you have any questions regarding Distemper please send them to us at newsletter@delmonkennels.com. Alternatively, if you have any topics for a future Vets Corner, please let us know.

Quiz Time!

Would you like to win tickets to Nando's Trick Training course? It's being held on Friday 5th December at the Kennels and we are giving away 2 tickets to come along and 'Watch and Learn'.

All you need to do is correctly answer the following questions and submit the answer to us via email to newsletter@delmonkennels.com by the 20th November.

All the answers are freely available on the IMDT Website, the IMDT Facebook page and on Steve and Nando's Facebook pages too. All you need to do is a little digging!

- When was the IMDT Founded?
- Who is the IMDT qualified trainer in Lanzarote?
- What date did the Institute of Modern Dog Trainers join Facebook?
- Where does Steve Mann live?
- When is Steve's birthday?
- Where does Nando Brown live?

- When is Nando's birthday?
- Name 3 things that Steve & Nando have in common?

The answer to the last question isn't specifically written anywhere, you need to use your imagination based on what you see on the website and Facebook pages.

Happy searching! The winner will be contacted by email.



Trick Training
Watch & Learn
with Nando Brown (IMDT)

adults **10/-** child **5/-** on Friday 5th December, 2:00 pm
at Delmon Boarding Kennels, Barbra

Tickets available from: **Delmon Boarding Kennels**
Tel: 17694066 - 39717609

Feedback & Suggestions

If you have any feedback, suggestions for articles, or questions for Ask Pauline, please write to us at newsletter@delmonkennels.com



Delmon Boarding Kennels